

Australian Lock Company...

*...setting a
new standard*

in padlock security!



Padlock Range

BiLock Padlock Range



Uncompromising and Incomparable!

The Australian Lock Company is proud to launch the newest addition to its expanding padlock range. The new BiLock hardened steel padlock offers such features not least of which is a competitive price that should see it quickly established as a market leader.

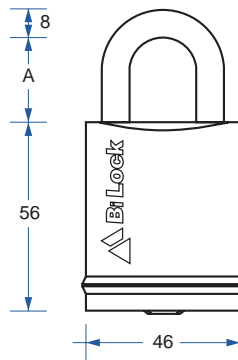
Hardened Steel Padlocks Features include

- A protective polyurethane cushion which offers protection from other surfaces contacting the padlock.
- A Molybdenum Shackle which is a super tough alloy steel for added protection.
- The BiLock padlock comes complete with cylinder or without cylinder.
- The padlock has been salt spray tested to 240 hours and passed.
- Marine Grade - C6
- Hardened Steel body.

Typical Uses

- Perimeter Gates
- Vehicles
- Vending Machines
- Industrial Safe Keeping
- Higher Security
- Areas/Buildings

BiLock's Hardened Steel Padlocks...

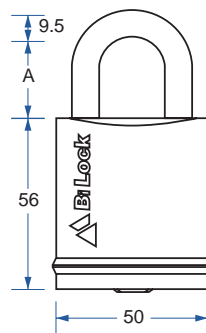


- FA6246 – First Generation
- FA6246Q – First Generation QCC
- FA6346 – New Generation
- FA6346Q – New Generation QCC

- Dimension A
 25mm Shackle – S
 50mm Shackle – SA
 75mm Shackle – SAA

Solid hardened steel padlock. Distinguished by its smooth "Satin Chrome" finish & "Black" plastic protective ring. Easily retrofitted with the FAC6244 BiLock cylinder.

Steel Padlock 46mm



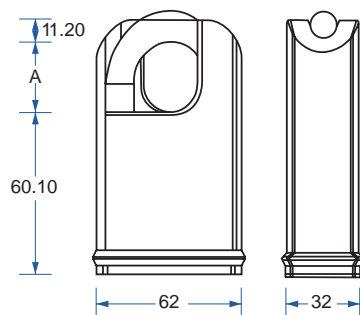
- FA6256 – First Generation
- FA6256Q – First Generation QCC
- FA6356 – New Generation
- FA6356Q – New Generation QCC

- Dimension A
 25mm Shackle – S
 50mm Shackle – SA
 75mm Shackle – SAA

Solid hardened steel padlock. Also distinguished by its smooth "Satin Chrome" finish & "Black" plastic protective ring. Easily retrofitted with the FAC6244 BiLock cylinder.

Steel Padlock 50mm

BiLock Hardened Steel Shackle Protected Padlock...



- 50mm Shackle Protected Padlock
- FA6251S - First Generation

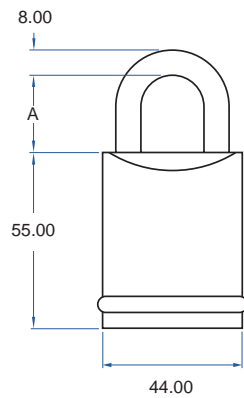
- 60mm Shackle Protected Padlock
- FA6261S - First Generation

- 70mm Shackle Protected Padlock
- FA6271S - First Generation

- FA6351S - New Generation
- FA6361S - New Generation
- FA6371S - New Generation

- Only 25mm shackle available
- Pack contains cam which converts to snap shut or key retained
- Padlock takes a FAC6244 cylinder

BiLock's Brass Padlocks...



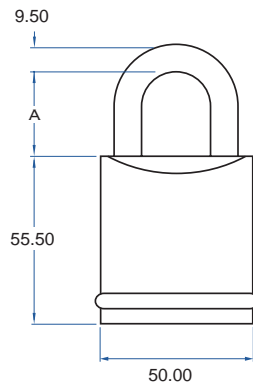
- FA6244 - First Generation
- FA6244Q - First Generation QCC
- FA6344 - New Generation
- FA6344Q - First Generation QCC

44mm snap shut/key retained Padlock. Padlock takes a FAC6244 cylinder. Shackle material is molybdenum which is a super tough alloy steel. Satin nickel finish.

- Dimension A
 25mm Shackle - S
 50mm Shackle - SA
 75mm Shackle - SAA

Pack contains a cam which converts the padlock to both snap shut or key retained

Satin Nickel Finish



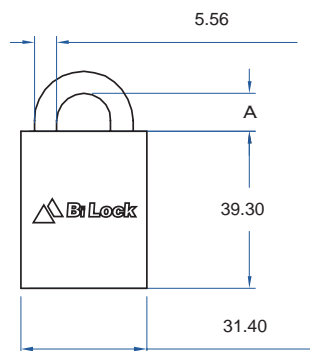
- FA6250 - First Generation
- FA6250Q - First Generation QCC
- FA6350 - New Generation
- FA6350Q - First Generation QCC

50mm snap shut/key retained Padlock. Padlock takes a FAC6244 cylinder. Shackle material is molybdenum which is a super tough alloy steel.

- Dimension A
 25mm Shackle - S
 50mm Shackle - SA
 75mm Shackle - SAA

Pack contains a cam which converts the padlock to both snap shut or key retained

Satin Nickel Finish



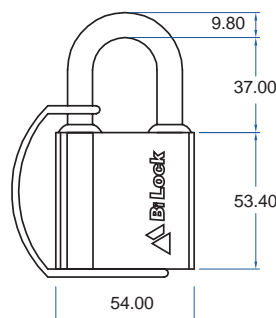
Small Brass Padlock

- FA6232 - First Generation
- FA6332 - New Generation

"NOT AVAILABLE IN QCC"

- DIMENSION A
 13mm Shackle - S
 25mm Shackle - SA
 38mm Shackle - SAA
 Less Shackle - LS

Brass Finish only



Water/Dust Resistant Padlock

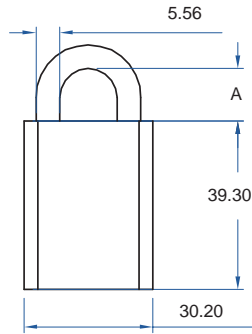
- FA6248 - First Generation
- FA6248Q - First Generation QCC
- FA6348 - New Generation
- FA6348Q - New Generation QCC

Water/Dust Resistant

- DIMENSION A
 37.85mm Stainless Shackle - SS
 58mm Stainless Shackle - SSA
 88mm Stainless Shackle - SSAA

Brass Finish only

BiLock's Plastic Isolation Padlocks...



First Generation

FA6235BLKBAA - Black
 FA6235REDBAA - Red
 FA6235WHITBAA - White
 FA6235BLUEBAA - Blue
 FA6235GRNBAA - Green
 FA6235LILBAA - Lilac
 FA6235YELLBAA - Yellow
 FA6235ORANBAA - Orange

New Generation

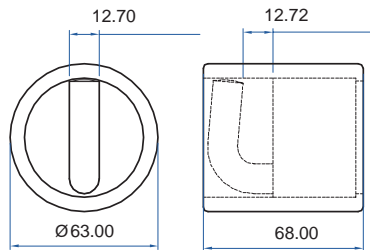
FA6335BLKBAA - Black
 FA6335REDBAA - Red
 FA6335WHITBAA - White
 FA6335BLUEBAA - Blue
 FA6335GRNBAA - Green
 FA6335LILBAA - Lilac
 FA6335YELLBAA - Yellow
 FA6335ORANBAA - Orange

BAA shackle [38mm brass AA] only. Key retained version only. Used extensively on mining sites to isolate equipment and reduce the risk of sparks. All colours are available less shackle [LS replaces BAA in product code above].

"NOT AVAILABLE IN QCC"

Delrin Plastic

BiLock's Heavy Duty Lokgard Solid Stainless Steel Padlocks...



FA6260 - First Generation

"NOT AVAILABLE IN QCC"

Respectively as above

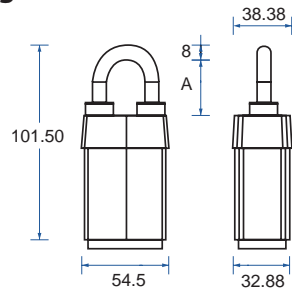
FA62R60SS - Lokgard Padlock Asio series

Lokgard Padlock

14.5mm Stainless Shackle - SS

Stainless Steel

Master Pro Padlock Range...



Padlock Range

(Complete with cylinder)

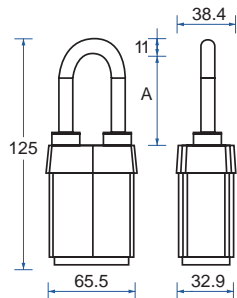
FA6621SC W 54mm, D 8mm, H 28mm

FA6621LJSC W 54mm, D 8mm, H 35mm

QCC

FA6621QSC W 54mm, D 8mm, H 28mm

FA6621LJQSC W 54mm, D 8mm, H 35mm



Weather Tough Padlock

(Complete with cylinder)

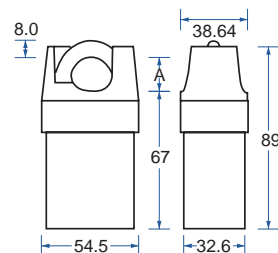
FA6627SC W 67mm, D 11mm, H 35mm

FA6627LJSC W 67mm, D 11mm, H 48mm

QCC

FA6627QSC W 67mm, D 11mm, H 35mm

FA6627LJQSC W 67mm, D 11mm, H 48mm



Shrouded Shackle Padlock

(Complete with cylinder)

FA6721SC W 54mm, D 8mm, H 19mm

FA6727LJSC W 67mm, D 11mm, H 19mm

QCC

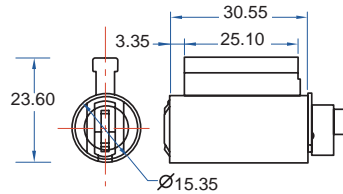
FA6721QSC W 54mm, D 8mm, H 19mm

FA6727LJQSC W 67mm, D 11mm, H 19mm

Please note, not all product is available (at time of publication) in New Generation. Please check with your nearest BiLock agent or Australian Lock Company. All measurements are in millimetres.

Steel has a different finish and as such thickness may vary to the satin chrome plated brass model. Steel has a black band in lieu of the red band for the satin chrome plated brass model. Steel cannot be engraved!

BiLock's Padlock Cylinder Range...

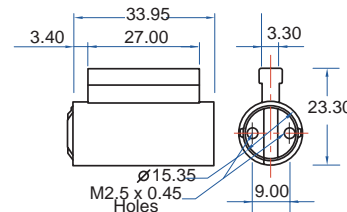


Federal Padlock Cylinder

Cylinder Only

- FAC6244 - First Generation
- FAC6244Q - First Generation QCC
- FAC6344 - New Generation
- FAC6344Q - New Generation QCC

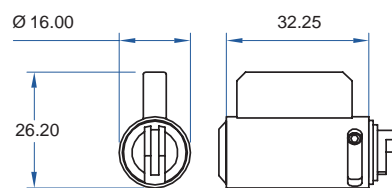
Natural Brass



234B45 Lockwood Padlock Cylinder

- FA6236 - First Generation
- FA6236Q - First Generation QCC
- FA6336 - New Generation
- FA6336Q - New Generation QCC

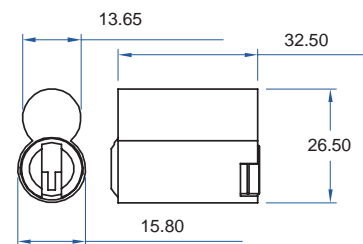
Natural Brass



Master Pro Padlock Cylinder

- FA6220SC - First Generation
- FA6220QSC - First Generation QCC
- FA6320SC - New Generation
- FA6320QSC - New Generation QCC

Satin Chrome Plate Cylinder Finish Only



Abus Padlock Cylinder Only

- FA6283PB - First Generation
- FA6383PB - New Generation
- FA6283QPB - First Generation QCC
- FA6383QPB - New Generation QCC
- FA6283SC - First Generation
- FA6383SC - New Generation
- FA6283QSC - First Generation QCC
- FA6383QSC - New Generation QCC

Satin Chrome Plate, Natural Brass

Compare BiLock's Check List ...

- ✓ Australian designed.
- ✓ Powerful, secure & unique colour coded 'Construction' keying system!
- ✓ QCC function patented to 2017.
- ✓ SCEC has endorsed the whole BiLock range of keying systems for 'Secure Area' locking.*
- ✓ The QCC cylinder is endorsed by SCEC for use in 'Intruder Resistant Areas'*
- ✓ Two Australian Design Awards ... Standard & QCC.
- ✓ Manufactured by winner Australian Government's Small Business & Manufacturer of the Year!
- ✓ Continuing Australian based innovations and improvements to mechanical access control!
- ✓ A 'LIFETIME' Guarantee** on the 'New Generation' dual bladed key.

* With the exception of the 6244 and 6250 which maybe used for "Secure Area" applications when used within a secure area.

** Conditions apply, including under normal use criteria.



Australian Lock Company, previous winners of ...

- Telstra & Australian Government's National Manufacturer of the Year (with fewer than 60 employees)
- Telstra & Australian Government's National Small Business of the Year
- Telstra & Australian Government's NSW Manufacturer of the Year
- Telstra & Australian Government's NSW Small Business of the Year.
- Australian Design Awards for QCC & BiLock

NSW

Head Office & Factory
17 Doyle Avenue
Unanderra NSW 2526
Australia
Phone 02 4272 4922
Int Phone +61 2 4272 4922
Fax 02 4272 4677

Victoria

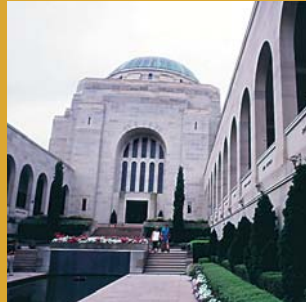
Sales Office
1st Floor
83 Lexton Street
Box Hill Victoria 3128
Phone 03 9897 4600
Int Phone +61 3 9897 4600
Fax 03 9897 3799

South Australia

Export & Global Marketing Office
Ground Floor
12 Greenhill Road
Adelaide South Australia 5034
Phone 08 8357 0455
Int Phone +61 8 8357 0455
Fax 08 8372 6007



National Museum of Australia - Canberra



Australian War Memorial - Canberra



Taxation Office - Sydney



Docklands Stadium - Melbourne



For further information contact

